



RT CORPORATION

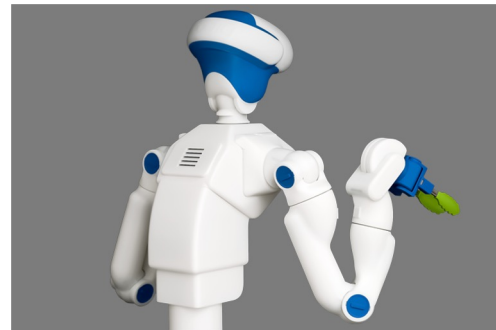
Foodly Collaborative Robot for Food Factory

Kazuki Kora
Kaede Yakushigawa



Foodly

- Humanoid collaborative robot
 - Torque control to allow working alongside human staffs
- Specialized for food factories
 - Custom end-effectors for different types of foods
- Vision system
 - Detection models specially trained for food detection
 - Runs on the edge (No internet connection required)





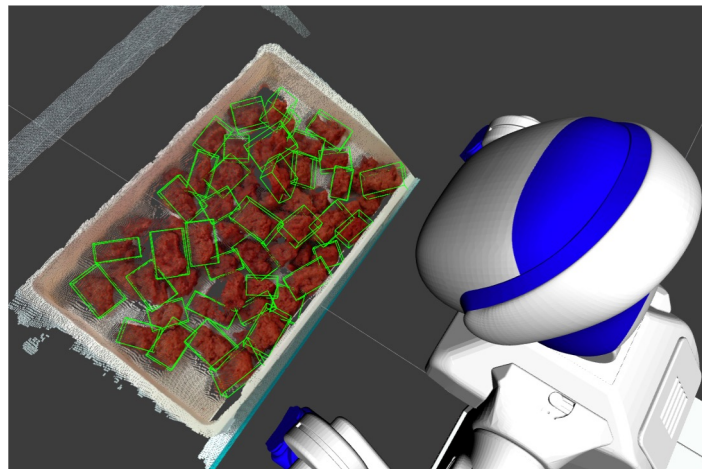
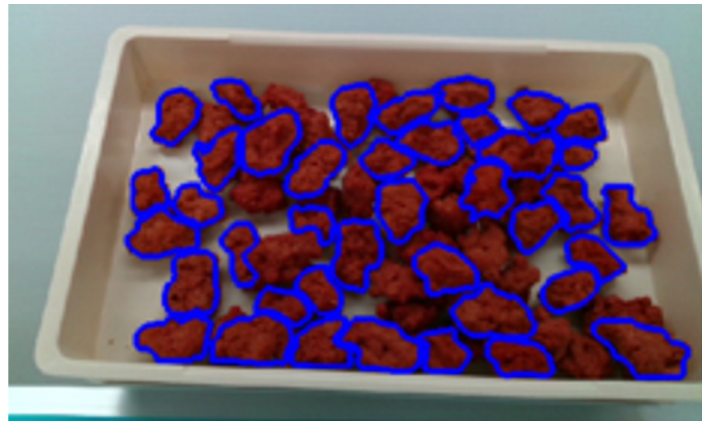
Foodly collaborating with human





ROS Features

- ROS Nodes
 - Organize many functionalities (perception, motion planner, user interface, etc)
 - Handle synchronous/asynchronous process
 - Reuse codes from different projects
- Visualization
 - Visualize object detection results in 2D/3D
 - Simulate factory environment
- Prototyping
 - MoveIt for earlier prototypes



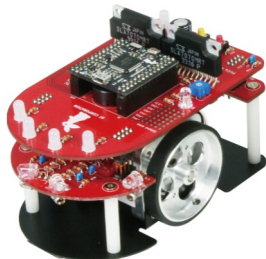
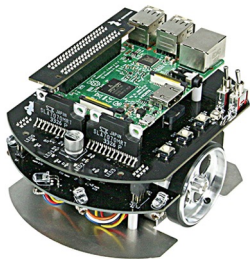


Applications





RT Corporation



Company Profile

- Founded in 2005
- Tokyo, Japan
- <https://rt-net.jp/service/foodly-en/>

Business Lineups

- Collaborative robot for food factories
- AI/Robot consulting for factory automation
- Design, develop, and sell robots for universities and institutes
 - ROS compatible

We are hiring!